

THE PINEAL GLAND AND THE CRISTIC STONES

JOSEPH SERNEGUET

ANALYST-RESEARCHER
FROM THE LITICAL BIBLIOTEC

<http://www.piedrasdeica.net>

E-mail: jsernequet@gmail.com

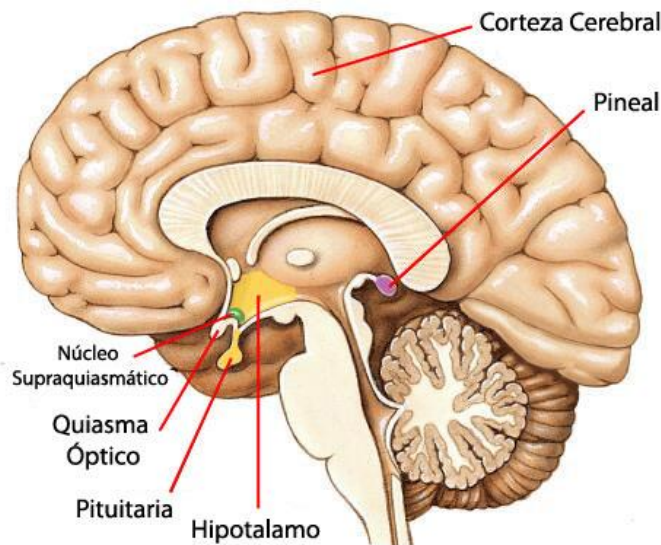
Barcelona (Spain)

Barcelona, 25 December 2016

THE PINEAL GLAND

The pineal gland is a small endocrine gland in the brain of vertebrates, responsible for producing melatonin, a hormone derived from Serotonin, which in turn modulates and affects sleep patterns.

Its shape resembles a tiny pine cone, it is located in the epithalamia, near the center of the brain, at the base of the hemispheres in a groove, between the two halves of the thalamus.



From the perspective of biological evolution, it represents a photo-receptor, allegedly atrophied in some vertebrates. In amphibians and reptiles, its function is of a kind of vestigial organ, also called "pineal eye".

Although in this article we only analyze the pineal gland of humans, looking for their background, in the knowledge of the ancestral cultures of the planet...

This organ, completely hidden at the base of the human brain, is reddish grey, and the size of a grain of rice, looking like "pineapple". It is documented in various supports of ancient cultures, and of course, in the enigmatic and mysterious Ica Lithic Library! , as we will see over the course of the article.

Much of the conclusions on the subject were activated when I heard the interview [that Ferrán Prat](#) did to Rafael López Guerrero on [Radio Valira](#) , on the Pineal Gland.

In it, Raphael, he argued several new concepts, at least for me, that are recorded in my mind, such as the effect "Wifi" of the pineal gland and its power of capture-transmission, of low-frequency stimuli, in the form of data packets, much of them coming from Schumann resonance.

It was very shocking and I calmed down, when he commented that the "crystallized", come into process to capture and enhance stimuli, through isolation, when the individual develops the hyper-transaction of data packets, at 10 million Hz/s, when it enters the quantum state.

The "crystallizations" in the pineal gland are the ones that activate in the mystical mind of the human being, but in the reverse process, to the "altered state of consciousness", when the human being edits in search of the Higher Self of his Soul and leaves aside, the Ego, connects with its cosmic origins, with the "wireless" Pineal Gland. Let us not forget that we are holistic, we have an "antenna" with the convergent universe, which at singular moments, becomes divergent.

THE PINEAL GLAND AND THE CRISTIC STONES

DR. CABRERA'S RESEARCH

Dr. Cabrera, as a surgeon, detected in the Stones of Ica, symbolic engravings of the Pineal Gland in the Homo Glipto. Let's see below, so singular discovery, of this mysterious and enigmatic gangster.

His theories are so avant-garde that they advance to the most current scientific discoveries.

Dr. Cabrera, always defended, until the last of his days, all his research on the Stones of Ica, especially those of medicine, with engravings of complex surgeries [of organ transplants](#), such as heart, liver, kidneys, stomach, etc.

They are also very important and remarkable, C-section operations, but those that are second to none are; Brain transplants! , to which we will open doors, for the pro-new postulates.

Let's look at Dr. Cabrera's notes on his research on the Pineal Gland below. I would like to recall that the data we will see below are from the 1990s or more, so I express my respect and admiration for Dr. Cabrera, a visionary genius of cognitive neuroscience.

HIS ARGUMENTS

The figures of extraordinary Message of the Mantle of Paracas, is the product of a preconceived and intentional plan of Genetic Engineering, which is tangible and scientific proof that man is not the product of a blind evolution, but of an action led by superior cognitive beings, who in this way wanted to differentiate man from other animal beings, that it is, were also genetic work of themselves.

But there is something else: this suggests that there are human beings who have these cognitive centers in both brain hemispheres and a fully functioning Epiphysis Gland, which, as we know, has been located above the Pituitary Gland. Classical anatomists called it the Pineal gland because it was pineapple-shaped, and because it also resembled the child's penis they called it "penis cerebri"

It is an odd and medium organ with the pituitary gland, located in a central place, and as the name implies, above it.

It is a gland that ancient medicine considered "very mysterious", but of great importance, so much so that the philosopher René Descartes needed it as "Seat of the Soul".

In the following centuries, with the advances of Embryology, Comparative Anatomy and recent statements of the hypothesis of the origin of life and theories of the Organic Evolution of living beings, she was relegated to a second and almost to oblivion, because they found only functions related to the physiology of inferior animals, such as fish , amphibians and reptiles, thinking that man, given his extreme smallness (6 mm long and 0.1 grams in weight) would be about to become extinct.

Clarifying some concepts and making use of later discoveries, it was stated that the Epiphysis or Pineal gland and its accessory organs, in fish, amphibians and reptiles, are photo-receptor mechanisms, whose cells are similar to the cones of the retina; and according to studies by Dr. Bernardo A. Houssay, Nobel Prize in Physiology (1947), "Epiphysis is an endocrine organ whose parenchymatous cells (pinealocytes) are secretory, releasing products that act on the skin and on some endocrine glands.

Activity depends on lighting, which through Pineal and its secretions nor-adrenaline, serotonin and melanin, act on gonads (testicles and ovaries)

It follows that the functioning of the Pineal gland depends on the uptake of photonic-solar energy, that would be received by cells similar to the cones of the retina that fulfill the function of synthesizing the substances that will stimulate all the endocrine glands, which direct and coordinate the biological functions of the animal organism and the so-called "circadian pineal rhythms" that exhibit a rhythmic variation in the production of the aforementioned substances, depending on daytime lighting and night darkness.

THE PINEAL GLAND AND THE CRISTIC STONES

In the "Books of Stones or Gliptolitos, the Pineal Gland is represented in the part that would correspond externally to the pterium and engraved in the form of an eye that reminds us of the so-called "Third Eye", attributed to special beings that existed in ancient times, which conferred on this legendary man, higher faculties.

Like having absolute knowledge, clairvoyance, telepathy and the extraordinary ability to transmute the organic body of certain men from Planet Earth into an energetic body and vice versa, a phenomenon that scholars of current medicine would consider, not only impossible but unscientific.



GLYPTOLYTE BEINGS WITH SYMBOLISM OF THE PINEAL GLAND

It is important to observe the human figure that appears in the Gliptolytes, has a very different anatomy from that of the current man: The head has a proportion of one third of the size, proportion that if the current newborn child has it and that it is reduced to a seventh part in the adult. Anatomical changes that have not been taken into account by any anatomist in the world and less by anthropologists, that ultimately this biological fact shows that man's body passes through the stages of the phenomenon of metamorphosis.

Returning to the human figure of gliptolyte, the Pineal Gl'andula is represented as an eye, in the region of the "pterium" above what would be the Turkish chair of the sphenoids, in which the pituitary gland is housed. The head is capturing cosmic radiation through hair, hair and skin, as well as sun rays. All this solar and cosmic flow (photons, and cosmic rays) are transported through the nervous system to the Pineal Gland, by means of two symmetrical nerves called coronary nerves found in the cerebellum store and that come from the upper cervical nerve.

THE PINEAL GLAND AND THE CRISTIC STONES

This corpuscular energy flow is distributed through its peduncles to the optic nervoso, brain hemispheres, pituitary gland and brain. This flow will transform the organ body into energetic, a fact that I deduce from the presence of the existing grids on the forehead and in the lower belly.

On the other hand, that the Glitolithic Man, given its special structure or rgic, had two forms of existence: one organic, with tangible body and one energetic, with ethereal body, not tangible but sensitive.

This mysterious phenomenon reminds us of many ancient and modern testimonies of people who appear and disappear, that cross walls or that have the gift of ubiquity, that would largely be confirmed by religions and legends, that official science does not confer scientific value on them and therefore rejects them flatly, and even more, they consider them products of the fantastic imagination or hallucinations of the mentally ill.

Finally, this fact reveals to us that The Glyptolithic Man, with two naturals, organic man and energetic man, was immortal, while today's human beings, in order to attain the hysterical way of life, need to die.

All these scientific discoveries, and others that I will give them to conorcer in my next book entitled: "Humanity andn the Mesozoic", contain incredible knowledge of a humanity before ours, the same that were also printed in other materials, such as textiles, in the "Mantle of Paracas", in ceramics and goldsmithing, in the "Huacos-Portraits" Mochica-Chimús and in the "Tumis", etc., in Peruvian territory, and in many other messages found elsewhere on Earth, such as the enigmatic "Red Codex" of the Yucatan (Mexico); the "Sumerian Tablets" of Asia Minor; the "Egyptian Papyrus" of the Nile basin; in the stone inscriptions in Nepal and Tibet; Stonehenge in England; The Pyramids of Egypt; the giant statues of Easter Island, Chile, etc., which have been given their true scientific interpretation to date, taking, as with our archaeologists, in interpretations without any scientific and less temporal value.

The deficiencies noted are occasional by an initial erro, consider that human life is recent, and that in the remote past there have been no intelligent beings as explained to us by the "Engraved Stones of Ica" and other similar testimonies and that they are also in many legends, apparently fantastic of the ancient peoples.

Below is the summary of a video by Dr. Cabrera in which he explains his research on [the Pineal Gland](#) and its representations in the Stones of Ica.

<https://www.piedrasdeica.net/documentos-hist%C3%B3ricos/pata-black/>

Additional note: The book mentioned by Dr. Cabrera: Humanity in the Mesozoic was never published, although I know that the manuscript exists, probably in the hands of its heirs, I hope that one day, its children and heirs will be updated and published.

STONE OF THE 12 STRANDS OF DNA

All the knowledge that Dr. Cabrera pours into the previous text, a priori unpublished, shared it with me, indirectly, during our interview in '99. Cuando told me the properties he was asking for, the Glyptolytic Humanity.

It all happened in front of a huge engraved Stone, with terrible dinosaur-to-human hunts, and in turn, from gilpto homos to dinosaurs.

During the master class I received, it made me see, that the Homos Gliptos, during the hunt wore a singular "helmet", which according to Dr. Cabrera, allowed them to be invisible to dinosaurs, even first to move, astrally and later, if they wished, physically.

I understand that Dr. Cabrera, by the previous notes, wanted to tell me that they possessed the power to activate r at the highest level, the faculties of the Pineal Gland.

THE PINEAL GLAND AND THE CRISTIC STONES

This Stone, which I have called since then; the Stone of the 12 Strands of DNA, I have documented it, in a lot, in several research articles on this website...

I recognize that increasingly surprises me, the very high knowledge that Dr. Cabrera possessed, maliciously misunderstood at the time, perhaps the fruit of envy and jealousy of some powerful character of the town. .

Going into details; In the central engravings of the Stone of the 12 layers of DNA, we see a Homo Glipto with a "helmet", equal to those mentioned by Dr. Cabrera in his notes, symbolism of protection and activation, of the powers of the Pineal Gland, I saw to above.

Now I understand Dr. Cabrera's words, when he told me that with the "helmet", the Homo-Glipto, travels his astral mind throughout Cosmos and "materializes" wherever he wanted.



STONE REVELATION OF THE 12 STRANDS OF DNA

Over time, I am increasingly surprised by the simple and didactic way in which Dr. Cabrera conveyed to me the knowledge of the quantum powers of Homo Glipto and his control over the Pineal Gland. I recognize that until today, I did not fully understand the message that Dr. Cabrera conveyed to me, and perhaps best of all, is that it follows an evolutionary progressive scale.

OPENNESS OF MIND AND REVELATION

This Stone was, the beginning my enlightenment. The key to the process was Voice and Words, because when I gifted Dr. Cabrera with the copy of the chemical analyses of the Condor Stone, it was like a rumble in the Museum, the statement I made to him about the Stones of Ica, according to my research, that they were, ARTIFICIALES, also that they had never been in any riverbed, the singularity that many were magnetics, and that some of them, upon contact with water, secreted a liquid, which I later called; "The Smart Adhesive," which joined the Broken Stones with artificial cuts.

The high silica content of the internal structure of the Stones, seen with a 3D linear mind, forces the conviction to stand before "Natural Stones".

THE PINEAL GLAND AND THE CRISTIC STONES

Aque Dr. Cabrera himself surprised me, when shortly after our interview, herecognized a journalist, that the Stones were very "frailis", as he somehow acknowledges in his [self-interview](#).

The truth is that the objective of my visit, was another, because I was looking for Stones related to the technique of construction of Homos-Glypts, in case I gave n algan idea about the technique used in Ancestral Cultures...

After years of research, via exact science and various inter-dimensional experiences of physical-mental preparation of my body; Por fin came the desired answer and I documented it!, with the name of: The Concrete of the [Ancients](#).

The truth is that witnessing and part of an interdimensional channeling, as happened during the interview with Dr. Cabrera, is a fact capable of breaking down all the mental barriers of linear knowledge, instilled by the official sciences, even the Universities, whose control is conditioned by the dominant Elites.

In the course of the document, I will include fragments of Plejadian pipelines of theibros; Messengers of Dawn and Earth, by Barbara Marciniack, as "Triplicate" of confirmation on all the hypotheses to be documented, in this research article.

PLEYADIAN TEXT OF THE 12 STRANDS OF DNA

*Imagine yourself taking an excursion with number twelve, and expose the concept of "twelve" to your mind. The material in this book is designed to decode the very system that structures and defines you: number twelve. Visualize yourself by living the numerical symbol of the One by the twelve. Like the twelve months of the calendar, the twelve movements of the twelve zodiac signs, the twelve hours of a clock and then add to these symbols your personal path of the "twelve". Imagine that your **DNA** is made up of twelve strands and that they activate and connect with your twelve chakras, which are the energetic portals through which you can access your spiritual heritage.*

I make it clear and in writing that, during my visit to the Cabrera Museum in '99, I did not know the Plejadian books, nor their authors, I think Dr. Cabrera did not either.

THE PINEAL IN ANCIENT CULTURES

The Pineal Gland is DOCUMENTED in the Ancestral Cultures of various Continents, also in the Catholic Church itself, as we will see below.

It is very evident in Mesopotamian civilizations, with its deities carrying in the right hand, a Pineapple, representative symbol of the Pineal Gland and on the left, a "cube" and a kind of "clock".

They are usually Ally Beings, not always with a humanfaceor, we can consider that they represent our Creators.

The limitations imposed consist of the regularization of the functions of the Pineal Gland, active in neuronal and chemical functions of the human bodyor, but veiled in 95%, the ability of holistic functions of the brain.

The former meet basic funtions of the chemistry of the body; the latter are more complex, because they are fulfilled a function, as "Wifi", where the thoughts, instincts, emotions, etc., all in a digital type environment, z-layer of activar " engines "unknown from our inner memory, from theorigins of life are synchronized.

Its priority function is the capture of low frequencies, such as the Schumann Ronslaught, whose vibration opens the doorsof interior knowledgetous, and interacts, syncemented, with the electromagnetic strands of DNA, called "garbage" and launches, the enormous potential of the Pineal Gland, with powers that are unknown to us, since by voice and word, eventhoughts s, we can modify ourfuture, personal and collective, accessing the fields multidimensional isthat they connect us with the Creators.

THE PINEAL GLAND AND THE CRISTIC STONES

This is the reason for the struggle between the "negativity" with which we are bombarded from the media and the positivism of prayer and meditation, which connects us with the Creators.

Going back to ancient cultures and its simbolicos objects, I would say that if the Pineapple, represents the Pineal Gland, the cube and the clock, son the controltools - limitationof human power, to differentiateus from the Creators

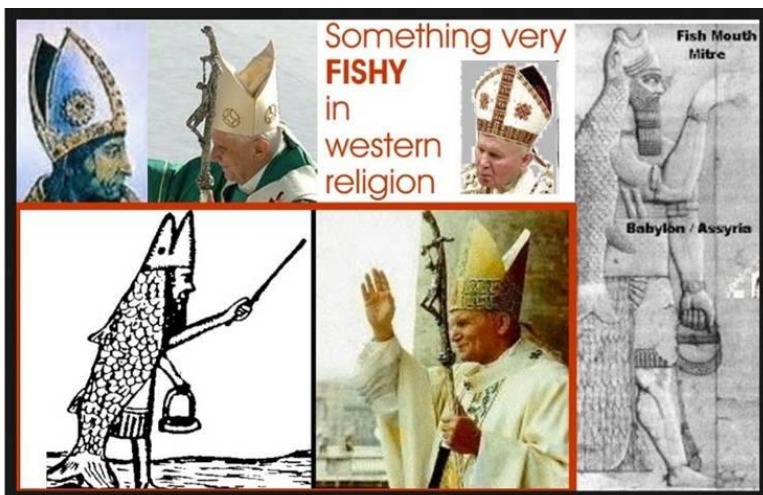


SUMERIAN DEIDEADE STEEDS CARRYING A PINEAPPLE

Admitting this assumption, the "clock" of the Creators, would represent the 3D Linear Time, in which we were placed to the Hombres, to controlour evolution, both positiveand negative.

Following this hypothesis, the famous "cube", would represent the limitation of mental power,in Humans, resulting from the unification of their races and species.

Pulling the same thread, we see that the pineapple is in the right hand and clock and cube on the left, Maybe an allegory to the cerebrales hemispheres? where the hemisphere is either cognoscitivor and creator, and left,practicaland material. Taking interpretation further, we could say, that the right represents the Being and the left represents the Ego.



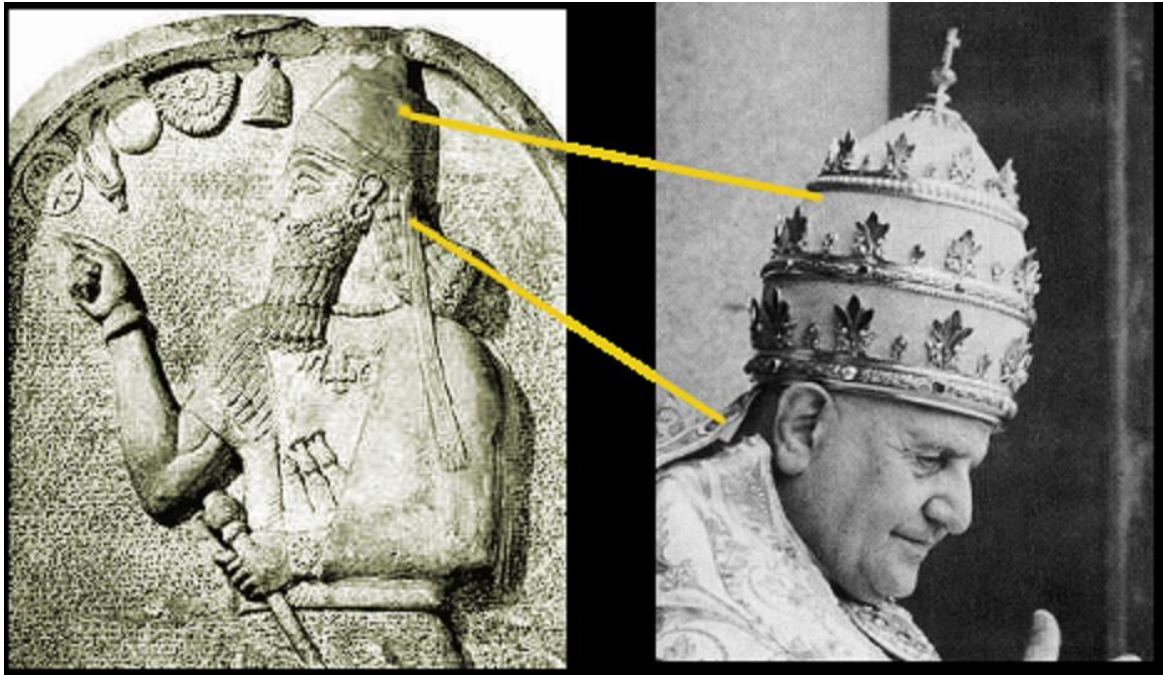
The symbolic resemblance between cultures, without the rigor of space-time is worth considering.

So we see the samesigns, linkedto the Pineal Gland, in the mostesopotamian cultures and the Christian Churches, as happens with the papalcaps it is. Casuality or causation?

In the side images, we see a total similarity, of the Sumerian attire and the papal cap, with its form of "fish mouth". An emulation tothe origin of Life, which began at sea?

THE PINEAL GLAND AND THE CRISTIC STONES

Also the Papal Tiara and the Mesopotamian headdress, in the images below, with its three rings of the crown and the back tapes, could represent, as postulated, the Trinity of the Catholic Church or perhaps the linear 3D of our Humanity. But by curling, the tapes could represent the pineal gland's connection to the spinal cord.



COMPARISON OF PAPAL CAP AND MESOPOTAMIAN HELMET

EVOLVED HUMANS

In the images below, we see an Ica Stone with three sides vertically, the top with a "pineapple" headdress, representative of the intermediate humanities, after the implantation of the "password", or modification of the pineal gland, as is also the case with the Stone, the [UROG](#), a key piece of my decoded and research.

These Stones are also allegorical of the three-dimensionality of the human being, due to the limiting implant of mental powers of the Unified Human being.

The three faces connect with the most powerful chakras of our physical body, but it is in the Pineal Gland where the Powers are located, for the connection of the Beings Evolved and the Creators.

THE PINEAL GLAND AND THE CRISTIC STONES



OTHER ANCESTRAL DATA

From ancient Rome to Mesopotamia, pineapple symbolism is one of the greatest mysteries of ancient architecture and art.

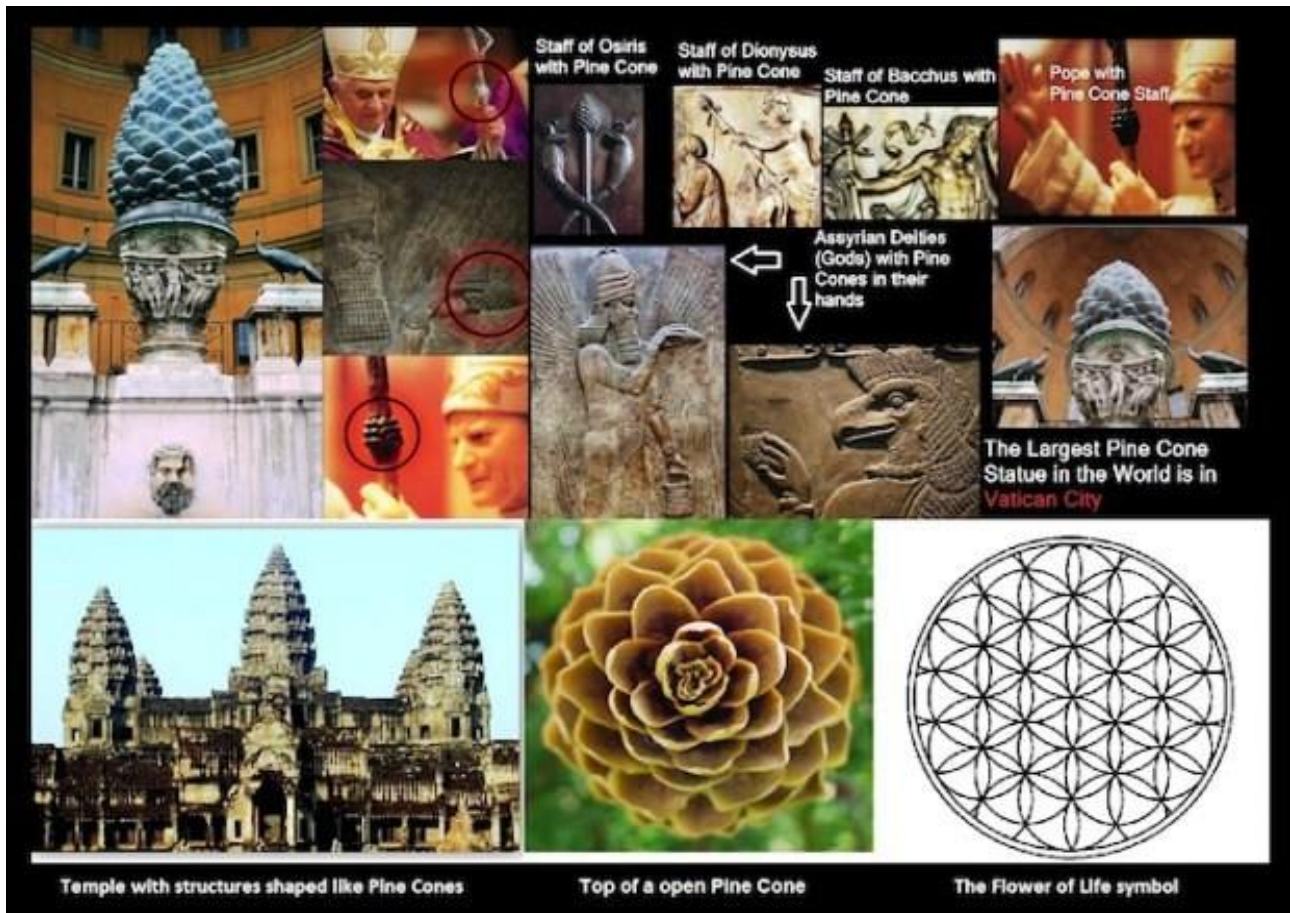
According to many researchers, this symbolism points to the highest degree of enlightenment and spiritual nation, a fact recognized by almost all ancient cultures of the planet, we see it in Indonesian monuments and symbolisms, Babylonians, Egyptians, Indians, Greeks, Romans, etc.

Strangely, the symbol of pineapple has the same meaning in all of them, represents the secret vestigial organ: The Pineal gland, also known as the "third eye".

The why, so ancient symbol is present in ancient cultures is a mystery, so from this document we will try to open new doors that allow us to approach, the Truth about our origins.

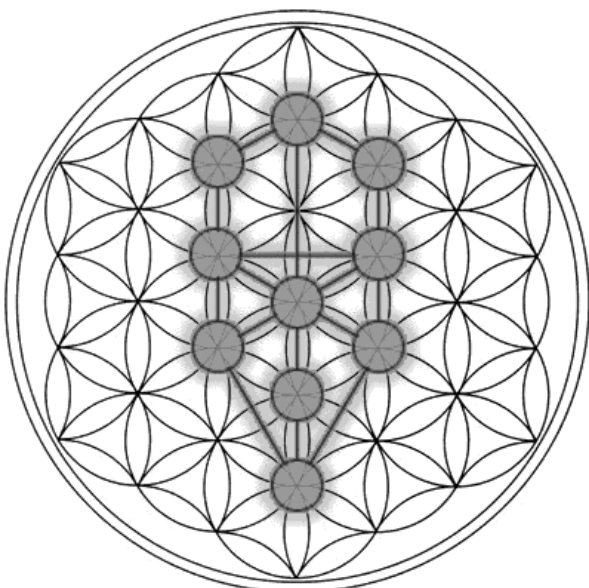
The symbolism of the Pineapple, seen in Planta, when it is about to bear its fruits, the pine nuts, not only follows the sequences of number Golden, also keeps similar with the Flower of Life, another ancestral symbol of ancient cultures and kabbalah. Perhaps the engraving that impressed me the most is the engraving that was found, embedded and vitrified, in a [stone of the Osirón, and in the Temple dedicated to Osiris, in Abydos, Egypt](#)

THE PINEAL GLAND AND THE CRISTIC STONES



THE TREE OF LIFE The symbol of

the Tree of Life is generated, geometrically, from the engraving of the Flower of Life, both symbols were created by Sacred Geometry, of the Golden Proportion, "A", as we see in the Osirón, is archetype of mythologies in countless ancestral cultures, was also recorded in 2009, in [the Crop Circles](#)



TREE OF LIFE, OSIRIS CROP CIRCLE 2009



THE PINEAL GLAND AND THE CRISTIC STONES

In the image below, we see that Mesopotamian art places it as the result of the chain of transmission of the "Creators" to the Semi-Gods, who in turn integrate it into the Tree of Life, code that governs us in the karmic process of Human Life, created with the conditioning of reincarnations, with powers limits two and a location in the Space-Time of the linear, 3D.

This is a kind of experience of Life, only in Cosmos, Govern by duality, karma and a process, Life-Death, capable of maintaining established occult, the enormous Power of the Human Being, inaccessible to the perversity that can reach such enormous potential, for the limitation of life prevents him from being excessively enhanced, and death teaches them, what is the truth of life, which will most likely accompany him in his new reincarnation, in the form of a karmic lesson.



THE TREE OF LIFE IN SUMERIAN CULTURE

All of these geometric shapes come from the Divine Proportion, "A", or number of Dios. Life Creation is a deeply mathematical reality, as we analyzed and saw in the Nazca Decode articles and their constant messages, which we will review below.

Is it a little more understood, why do we base on Exact Sciences, the study and decryption of the Stones of Ica?

THE NAZCA BOARD

This information is engraved on the Stones of Ica, where the Figure of the Nazca Monkey, "shelter" under its belly, homo Glipto, that is, the Creators, the Tree of Life at the bottom is the confirming symbol of a successful and prosperous result of Life on the Planet. This information trilogy is a fact for today's Humanity.

All this symbolism is telling us, that the History of Humanity, past, present and future, is codified in the Lines and Figures of Nazca, as I say in my research of the Great Board of Nazca.

This Stone is not unique, it is part of a series related to Figures of Nazca, which give more strength and truthfulness to [the Decoded of Nazca](#), commissioned that I received, inter-dimensionally, by the Creators, from the upper planes

Even the initial forecast was exceeded, going further, with [the decode of the Paracas Chandelier](#), which opened the doors to the arrival of the Stones of Continents, in the Third Millennium, with keys to decode: [Los Planetary Rings](#)!

THE PINEAL GLAND AND THE CRISTIC STONES



ALLEGORICAL ICA STONE TO THE GREAT BOARD OF NAZCA

Toda a chain of cosmic information, perfectly synchronized and with the contribution of incredible knowledge, which I will decode as I repeat in my subconscious and channeled way, the information triangularly with fret.

I must admit, that my Ego does not control the information that comes to me from higher planes, I have to let that knowledge consolidate in my mind, and document it as an exquisite dish of good cuisine, gradually, simmering, with magical precise touches. Well, I feel inside me how it takes shape and mode, that information that came to me a while ago.

This feeling, is developing more and better, for without a doubt, my mind is increasingly prepared to assume the desire for a knowledge, than something or someone, dictates to me from other dimensional planes, and that I decode for the Ascension of Humanity.

COGNITIVE IMPLANTS

The information beset by the Stones of Ica, in the series of operations, especially brain, personally I do not associate with "transplants", I understand that rather they are modifications of the Pineal Gland, to implant the "password" limiter of our brain, as an argument for years.

Cognitive implants were not a unique experience, it was the work of an arduous structural work of the human brain, which as a result, united the bioies of all races that collaborated in the life of the planet, in ancient times.

Carrying out such a sophisticated plan, it was no easy task, our Creators had several experimental failures in the life forms of the planet, until they had to deliberately raze several times, all the life forms of the planet. Geological Geology officially recognizes no less [than five major planetary extinctions](#) in the last 425 million years.

Probably went much to more, if we take into account that Earth, is estimated to be over 4.5 billion years old. So, applying pure mathematics, we induce that the figure could multiply by ten, the number of extinctions, officially recognized.

THE PINEAL GLAND AND THE CRISTIC STONES

We don't really know, practically nothing of our origins. It is hardly known how much of the human being that may have existed, from the age of 2.5 million.

These numerical reasonings are explicit enough to question, absolute truths, or dogmatic credibilities. It is clear that the "password" imposed by the Creators of Life, is unbeatable and works.

SEESION PLEYADIANA

*Our ancestors came from a universe that had been completed, which had understood that it was the Original **Creator**, they had understood that they were a journey of the **Original Creator** in time. They came from a universe that had discovered its essence – creativity. Upon discovering this essence, they understood that they themselves were the creators.*

*They came to the **Pléyades** because they knew that this star system could help you in an extraordinarily challenging time, a time when you would be prepared to reconnect with the Original Creator. Our ancestors belonged to the original group of earth planners, orchestrators who sowed worlds and civilizations with light and information through creativity and love. Our ancestors are also your ancestors. They gave their **DNA** to the Original Planners and **this** DNA became part of the **DNA** of the human species.*

*There was a lot to come and go so that there would be an individual representation of every galaxy on Earth, because everyone wanted to have their fellowmen on this planet. Some of those who took care of all this, the so-called Creator Gods, were masters of genetics. They were able to create, discover and gather molecules by equipping them with an identity, a frequency and electrical charges to create life. Many sensitive civilizations voluntarily gave their DNA to have something similar to their genetic lineage and code here. On this planet. Genetic masters designed a variety of species, some human, other animals, playing with **DNA** donated by sensitive civilizations to create an information exchange center, a center of light.*

Earth's design was a really big thing. Since for these Creator Gods there was no time as you know it, a few hundred thousand years or a million years meant nothing to them.

There have been other human species, similar to you and whose DNA was in perfect condition at the time, that developed highly evolved civilizations. They existed a long time ago, more than half a million years ago. We are not talking about those civilizations that you call, Lemuria or Atlantis.

*These times belong to a time that we call "modern". We refer here to civilizations that are truly ancient, as old as those buried under the ices of your southernmost continent, Antarctica, or under the **Gobi Desert** in Mongolia.*

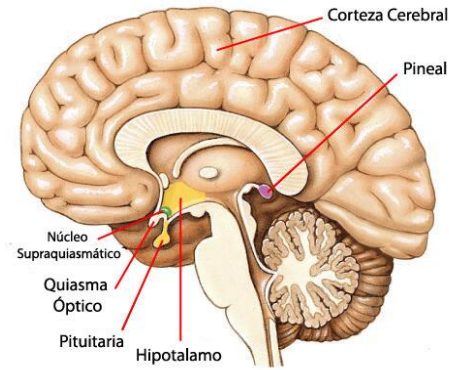
Some energies, which you call gods, created everything on this planet using its intelligence. There is awareness in everything that exists on Earth, including in the molecules of your fingertips, and everything has been created to work in unison. Consciousness is continuously communicated by electromagnetic frequency vibrations. These frequencies connect and function as an investment corporation.

*The **Creator Gods**, those who believed the strength of creation, gathered together, gathered their knowledge, and began to create ways of life. They borrowed DNA **and** genetic material from many different worlds. This material was stored in Earth's library system which, in turn, was connected to a system of twelve cosmic libraries. As you can see, the plan for Earth was great.*

BRAIN OPERATIONS

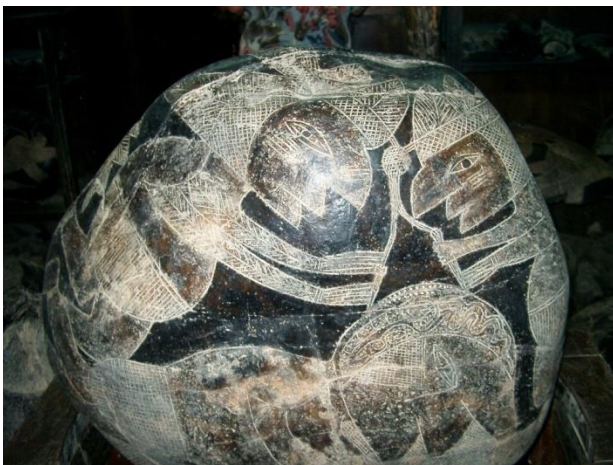
We see some enlightening details in the brain operations engravings.

THE PINEAL GLAND AND THE CRISTIC STONES



ICA STONE BRAIN OPERATION HUMAN BRAIN SECTION

In the engraving of the Stone we see that the "surgeon" lifts the cerebral mass of the cortex, seeking above the cerebellum the space necessary to introduce the "password" modifier of the Pineal Gland, disconnecting 95% of faculties and mental power possessed by the human being, placing it in a space-time capsule, very dense and with human biology, carbon base.



Going into detail, we see in the Stone on the left, the engraving of a trepanation in the area of the cerebellum, instead on the right if it shows us an execution of modifications of the sensory and motor pathways, represented by "snakes". This symbolism can mean an "adjustment" of "Snake" biology, modified for "Draco" biology.

These Stones are telling us that, in the Planet-Laboratory, biological tests have been carried out between humans and beings from other constellations, until we conclude to unify the different human races that had been created, but integrating into DNA, the biology of all.

In this way, potentially, our DNA has the power to regenerate life, no matter what, because we are prepared to "mutate" to other physical forms even with other bases, organic or inorganic, depending on the new parameters that govern the Planet.

As I defined in the article of the [Stones of the Third Millennium](#).

There is a Divine Order in Cosmos. Chaos doesn't exist!

The Universe is a prototype of "Smart Design", creator of Life from the Cosmos

THE PINEAL GLAND AND THE CRISTIC STONES

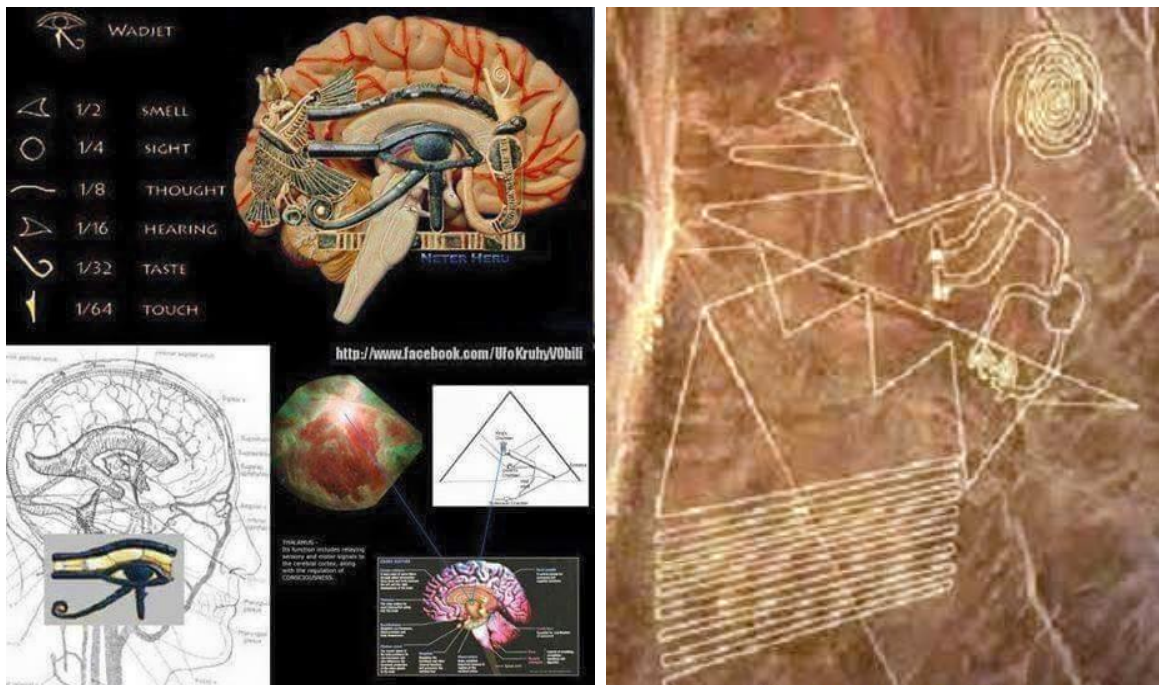
THE PINEAL GLAND AND COSMOS

The truth is that, as Descartes said, in the Pineal Gland is the main seat of the rational soul, this affirmation, on horseback between philosophical affirmation and scientific revolution, made descartes in the seventeenth century, a very advanced concept for those times.

But let's look at other cosmic vestiges, even esotericones, if you will, that relate the Pineal Gland to the Eye of Horus of Egypt, and that personally, I want to take further.

Ancient cultures throughout the planet have always associated a link between the Pineal Gland and the Eye of Horus, but I have no precedent for them to be associated with the Pléyades, let alone the Great Board of Nazca, in which the Figure of the Monkey and hisoddes, is explaining to us the cosmic biology of our Humanity and its link to the Pléyades.

Let us emphasize in this statement, if we want, as a hypothesis, we will soon analyze the relationship and keys that share with each other these symbolisms, allegedly codified, but which in reality have always been in sight, right under our noses.



PINEAL AND HOJO GLAND OF NAZCA'S HORUS MONO and MULTIDIMENSIONES

The discovery that Pléyades lent to our Humanity, its biology and genetics, when the races were joined, plus the series of Engraved Stones of Ica, related to these facts, opened new doors of knowledge to me, to decode these riddles and transmit their light to Humanity, within the process of cosmic self-evolution that is happening.

THE LAYADES AND THE CROP CIRCLES

These codes are engraved on the Nazca Board, in the form of Figures and Lines, its main character, is the Monkey, representative of Pléyades, as we will see below.

THE PINEAL GLAND AND THE CRISTIC STONES



PLÉYADES CROP CIRCLE CONSTELLATION FROM PLÉYADIS

The Pléyades, we see them in texts and engravings of culturas and ancient religions, from all over the planet as is the case of, the Bible, Mesopotamia and cultures such as Maya, Inca, Aztec, etc., were also recorder in a Crop Circle, as is the case of, Westover-2002.

One detail that I consider important of the Crop Circle, is the "cord", similar to the old electrical cables braided and with end dand "plug" of sideburns, which seen with quantum mentality, seemsto indicatethat, Pléyades are "connecteds" to the planets that bequeathed their genesand biology.

It is clear that they take care of the evolution of Humanity, if they are our Creators.



This detail was opened to me overlooked if it were not for its similarity to the "Serpentine" of the Monkey Figure, as I documented in the, [Decoded of Nazca](#), pag.18. 7, when I discovered that, the "serpent" represents the Multidimension is that they isolate us from the Creators, for well, I understand that the turns of the Crop Circle "twisted cord" is information similar to the "serpentine" of the Nazca Monkey.

THE LIVING LIBRARY

L to Family of Light isa set of coded features that brings information to this planet. Coding is within each individual. Once you are willing to question and look beyond current interpretations of reality, you will be guided to create forms of thought that will trigger your codes. We are a group of energies that catalyzes human codes of consciousness at a certain moment of planetary

THE PINEAL GLAND AND THE CRISTIC STONES

evolution. This process will take place as you evolve, and you will receive a great deal of instructions from still unknown teachers, but who will appear to help you.

*We have suggested that about half a million years ago tumultuous events occurred in this area of existence and that they shaped your Earth as it is now. To a large extent, the Earth lost its sovereignty and another force of government sneaked in and claimed the rights of possession of this fantastic property that you call home. These recent godlike administrators have not always been the kindest and most benevolent. Earth was created billions of years ago for a purpose. She was to be an intergalactic information exchange center, part of a huge library system, don-of-being would store the data of many galaxies – a **Living Library**, to be exact.*

INTERMEDIATE HUMANITIES OF THE PLANET-LABORATORY

I understand that the "password" that was implemented to us was a complex process, subjected to various tests and adjustments, only in this way are understood the five mass [extinctions of The Planet Earth](#), in which most of the life of the planet disappeared.

These catastrophes did not happen coincidentally, they were caused by the Creators of Life, in order to continue with new adjustments to the new design of the human being, especially so that the New Race would not question its Creators.

That was the reason for the "veiled" of powers of the human brain, we were disconnected from the electromagnetic strands of access to the multidimensional fields, the only way to reach the residence of the Creators.

On the other hand, if the DNA of two biological strands, controlled by electromagnetic waves (Schumann resonance), from Cosmos was activated, through which the evolution-involution, of everything that represents Life in the Planet-Laboratory, is synchronized to control a programmed evolution of the Human Being, on his return to Cosmos, after an undetermined number of life experiences.



HUMANITIES BRIDGE BETWEEN GLYPTOLYTICS AND OURS.

In the images above we see that humans, engraved in the Stones of Lica, are carriers of headdresses in the form of "capro", to which I associate intermediate humanities, between Glyptolitic humanity and ours. These beings can be perfectly, humanities of Mu, Lemuria or Atlantis, even of continents disappeared and ignored by us, of which only the Political Library and some engraved on various supports, treatises of "mythological" attest to their existence.

The images above are a minimal representation of the life forms of the Planet-Laboratory, based on carrying "touch", which associated it with post-implant humanity.

I understand that there were many other intelligent life forms, with very advanced knowledge and zoomomorphic bodies, even beyond mythology.

THE PINEAL GLAND AND THE CRISTIC STONES

Those who wish to see other characters represented in the Ica Lithic Library can see them in the "Photos" section of the Web, where they will also be able to see spectacular engravings of surgical operations, some of them totally unknown to our current science.

<https://www.piedrasdeica.net/fotos/>

THE CRISTIC STONES

In the Lithic Library there are a series of Stones, very enigmatic, the words "Crísticas" and are related, to the Life, Passion and Death of Jes'ss-Cristo, it is clear that they are the most enigmatic, committed and criticized of all series.

These concepts are incomprehensible, seen from 3D linearity, but it analyzes two quantum minds, without space-time limits, we light up and see true reality.

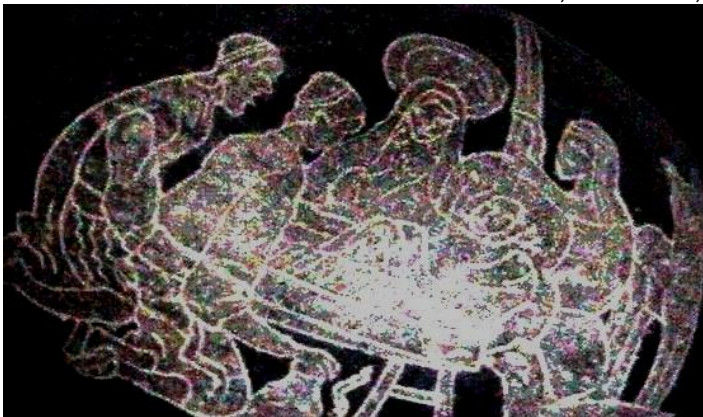
Well, this document will try to reason the logical existence of these Stones, because they are certainly linked to the powers of the Pineal Gland and the higher dimensions. I know that you will love the development of research, from this moment on!

In this document we will not have the account, the human life of Jesus of Galilee, despite the allusive similarity is from the biblical accounts with the engravings of the Stones "Clerical"

My friend, [José Luis Giménez](#), in his books and web, documents exceptionally and with great mastery, all the details of the life of Jesus, as a natural person, I recommend without any doubt, the reading of his books and visits to his Website.

It is obvious that the Christic Stones, come from the upper dimensions, in the Great Central Sun, where all the evolution and history of planet-laboratory Earth was programmed, from its origins, to our final destination and recorded in the Great Board of Nazca.

Let us look at some "Christic" Stones, of the life, passion and death of Jesus of Nazareth.



BIRTH OF JESUS JOSEPH AND MARY, WAY OF BETHLEHEM

A good reason that we are documenting, HERE and NOW, the Christic Stones, is because they are carriers of Coded Messages, destined for the evolution of Humanity.

The Stones of Jesus-Christ of the Secret Wardrobe, are totally contradictory to the initial postulates of the Political Library, are total timeless, have no relationship with dinosaurs or humans from millions of years ago. The same goes for dating, or concepts, "Antiquity" or "Archaeology", all of which are invalidated, in the face of the beauty of the quantum image of the "Christic" Stones.

I understand that, little by little, the functions of the Pineal Gland begin to take center stage, as does the justification for why the "veiled" of Human Powers.

THE PINEAL GLAND AND THE CRISTIC STONES



JESUS WHIPPED JESUS ON THE CROSS

At this point, it is obligatory to argue the tripled tests that I always demand in my research, as is the case of holographic insertions pleyadians, with the inclusion in our cellular world, of the "Divine Hispanic or Cristic. Inserted in the human mind, to generate "Sindictments", such as Love, Fear, Hate, Friendship, etc., a whole myriad of holistic sensations, fruit of the dual system that was instilled in us and activated by thought, voice, or low-frequency waves from Cosmos.

Let us see below, what the Pleyadians say about the holographic insertions of Jesus-Christ, excerpts of channels by Barbara Marciniak, in his books: Messengers of Dawn and Earth.

PLEJADIAN CRISTIC IMPLANTS

This time, as we see it, is not light. An example of a holographic insertion that was put on the planet in the past to change the course of history was the crucifixion of Christ. The drama that was performed and transmitted to you throughout history is not the reality that the Christ came to represent. A version of this entity's life was shaped and designed into a holographic entertainment film, which was inserted and acted as if it were real.

Christ came as a committee of beings over a period of time. The story they have told you has been an exaggerated and commercial version: a very controlled sequence of who this entity is and has been. Part of the drama of Christ taught to you was a holographic insertion.

In this section, the Pleyadian channeling says that we had a holographic insertion into our brain, the Cristic! I understand that it confirms to us the theory of the "password" limiter, which I had been claiming years ago.

Given the background, is it so strange that the Creators record in Stones such a singular fact? Personally, I find it great!

DECEMBER 25 CRISTICS

In reality, the Cristics was sent as a dismantler of the system, as a member of the Family of Light, to carry the flame through the portal of the Middle East. This created a path for many to enter and plant the seed of a reality that would prepare consciences for the cycle that will approximately end over the next twenty years, depending on how events happen. The Christ came not as an entity but as a series of entities, influencing people in the dark hour of humanity, a time when human beings were prepared to understand their

THE PINEAL GLAND AND THE CRISTIC STONES

mysteries. One of the things that was not truthfully communicated was that the Christ had been very well accepted. The kind of energy that the cristic beings brought to the planet had great acceptance then



In this section, the channeling tell us, that the Cristics, is not a Unit is a set of deities that the Pineal Gland keeps in the archives of its subconscious, depending on the origins of humans, but like Ente, it is always the same "Christ".

Its main prominence is to project the image of our, Higher Self or inner Christ, when the human being meditates or begins his "return home".

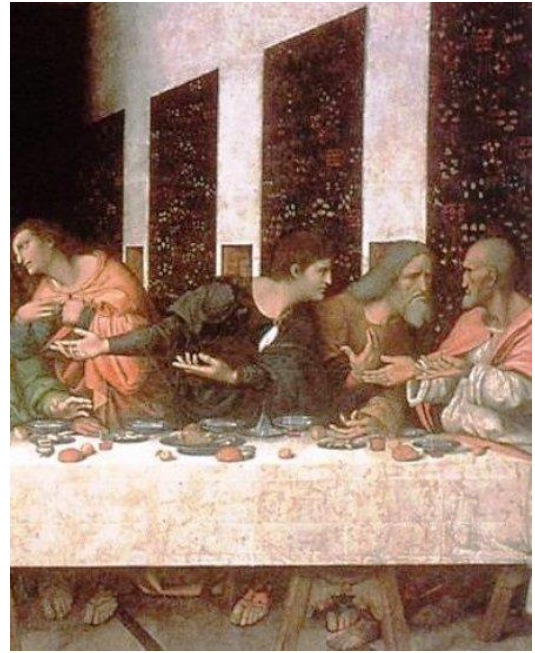
All according to their beliefs or religions, when it manifests itself, the holography of the "Christ" that they have idealized in their cosmic memory.

This is why, Jesus, Buddha, Allah, Krishna, Hermes e Zarathustra, etc., are the same Divine Entity, in essence. In reality, the human being communicates with his Higher Self or His own Divinity.

LAST SCENE

Creators always keep an Ace up their sleeves. His Ace is the Engraved Stone of the Last Supper, the most disconcertingly quantum of all that have been created, since the engravings and themes are exactly the same as Leonardo Da Vinci's mural painting, in the refectory of the Dominican convent of Santa Maria de la Gracia, in Milan, disconcerting!

THE PINEAL GLAND AND THE CRISTIC STONES



LEFT SIDE OF THE STONE AND PAINTING OF THE LAST SUPPER

I have no doubt that we are facing the greatest Timeless test that has been given to our humanity, since it breaks all the concepts of our linear 3D.

Possibly, most of you, you think it's a crude copy of our day, of Da Vinci's mural, and if it weren't for my knowledge of the Stones and the way the Creators acted, so would I, but let's not rush and analyze the details of such a unique Stone.

When you enter its singularities, you detect that the work of the engravings, despite its simplicity, is far superior to those of the mural itself, and not only by comparing a painting with a stone engraving, also by the time invested and the risk of errors in the supports.

Let us not forget that da Vinci, took more than three years to finish his work, with modifications and doubts. The Creators of the Stone engraved it without any error and in timeless mode.

Just by analyzing the left side of the painting with the engraving of the Stone, we see very important technical details, such as the different points of leakage of the perspective, more frontal in the paint and higher in the Stone, allowing a greater visualization of the objects and details that are on the table.

Let us remember that there is a lot of ink written on the hands, plates, cutlery, etc., based on Leonardo's painting, such as the existence of a musical scale, the symbolisms of the Stone would have to be decoded, perhaps it carries an important message.



The features of the Apostles of the Stone are clearly Aryans, without the inclusion of other races, as is the case with the traits of the apostles of painting, very "human", typical of the time.

As there may still be doubts, I will continue to provide "winks" from the Creators, to crush my self-disbelief, so I return to the initial foundations of my research, and return to the point where I mentioned the existence

THE PINEAL GLAND AND THE CRISTIC STONES

of Stones with certain, [artificial "Tapas"](#), as I have documented in several articles, even in videos.

Well, the biggest lid I've ever seen in the Stones of Ica, it has it, the one from the Last Supper!

Its entire base is a huge Cover, as we see in the image to the left of the text.

This was one of the reasons, why the 11-11-11, I wanted to do a meditation with the Christic Stones, as I documented in the article : The secret codes of the Stones of the Third [Millennium](#), in which on page 2 I make a first advance and reflection on this extraordinary Stone, the most disconcerting and controversial that the Creators have bequeathed to us.

Let us look at a small summary of the book, EARTH, with Pleyadian channels made by Barbara Marciniak, where they transmit to us, codes and keys of the Living Library, destined for our Humanity, for they are undoubtedly the guides and protectors of our self-evolution.

PLEJADIAN GENETIC CODES

*Our ancestors came from a universe that had been completed, which had understood that it was **the Original Creator**, they had understood that they were a journey of the **Original** Creator in time. They came from a universe that had discovered its essence – creativity. Upon discovering this essence, they understood that they themselves were the creators.*

*They came to the **Pléyades** because they knew that this star system could help you in an extraordinarily challenging time, a time when you would be prepared to reconnect with the Original Creator. Our ancestors belonged to the original group of earth planners, orchestrators who sowed worlds and civilizations with light and information through creativity and love.*

*Our ancestors are also your ancestors. They gave their **DNA** to the Original Planners and **this** DNA became part of the **DNA** of the human species.*

There was a lot to come and go so that there would be an individual representation of every galaxy on Earth, because everyone wanted to have their fellowmen on this planet. Some of those who took care of all this, the so-called Creator Gods, were masters of genetics. They were able to create, discover and gather molecules by equipping them with an identity, a frequency and electrical charges to create life.

*Many sensitive civilizations voluntarily gave their DNA to have something similar to their genetic lineage and code here. On this planet. Genetic masters designed a variety of species, some human, other animals, playing with **DNA** donated by sensitive civilizations to create an information exchange center, a center of light.*

Earth's design was a really big thing. Since for these Creator Gods there was no time as you know it, a few hundred thousand years or a million years meant nothing to them.

There have been other human species, similar to you and whose DNA was in perfect condition at the time and developed highly evolved civilizations.

They existed a long time ago, more than half a million years ago. We are not talking about those civilizations that you call Lemuria or Atlantis.

THE PINEAL GLAND AND THE CRISTIC STONES

*These times belong to a time that we call "modern". We refer here to civilizations that are truly ancient, as old as those buried under the ices of your southernmost continent, Antarctica, or under the **Gobi Desert** in Mongolia.*

Some energies, which you call gods, created everything on this planet using its intelligence. There is awareness in everything that exists on Earth, including in the molecules of your fingertips, and everything has been created to work in unison. Consciousness is continuously communicated by electromagnetic frequency vibrations. These frequencies connect and function as an investment corporation.

*The **Light Family** is a set of coded features that brings information to this planet. Coding is within each individual. Once you are willing to question and look beyond current interpretations of reality, you will be guided to create forms of thought that will trigger your codes. We are a group of energies that catalyzes human codes of consciousness at a certain moment of planetary evolution. This process will take place as you evolve, and you will receive a great deal of instructions from still unknown teachers, but who will appear to help you.*

*We have suggested that about half a million years ago tumultuous events occurred in this area of existence and that they shaped your Earth as it is now. To a large extent, the Earth lost its sovereignty and another force of government sneaked in and claimed the rights of possession of this fantastic property that you call home. These recent godlike administrators have not always been the kindest and most benevolent. Earth was created billions of years ago for a purpose. She was to be an intergalactic information exchange center, part of a huge library system, don-of-being would store the data of many galaxies – a **Living Library**, to be exact.*

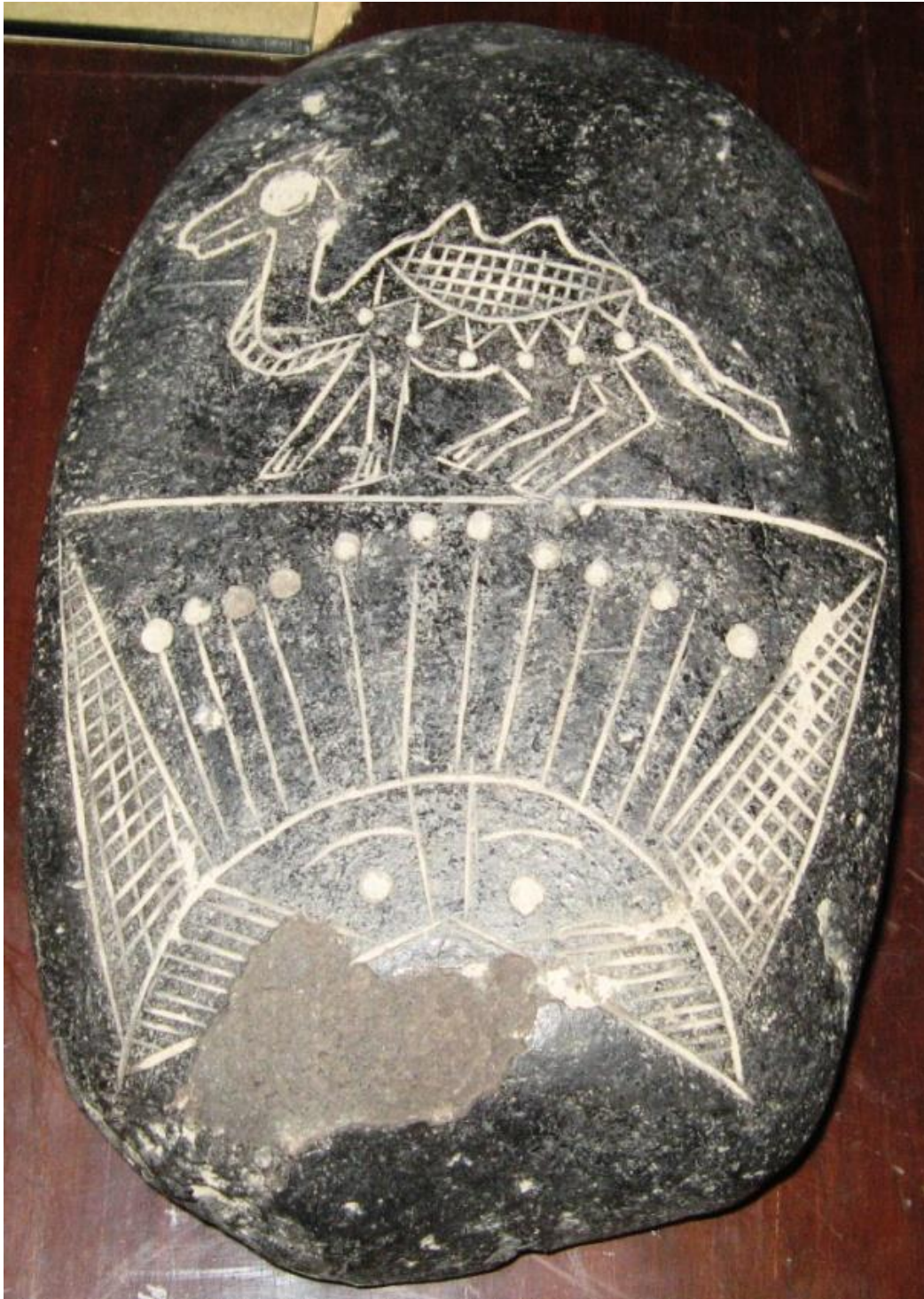
*The **Creator Gods**, those who believed the strength of creation, gathered together, gathered their knowledge, and began to create ways of life. They borrowed DNA **and** genetic material from many different worlds. This material was stored in Earth's library system which, in turn, was connected to a system of twelve cosmic libraries. As you can see, the plan for Earth was great.*

THE POWERS OF THE PINEAL GLAND

The text, "It is easier for a camel to pass through the eye of a needle, than for a rich man to enter the Kingdom of Heaven" is written in the Gospel of Matthew (Mt 19:24).

Although Bible studies accept the text of Jesus, as a critique of the usury of the rich, this document will give it another, say, more quantum meaning.

THE PINEAL GLAND AND THE CRISTIC STONES



The Stone that we will analyze below, since I know it, always caught my attention for its engravings, although I did not finish understanding the content of its Message, until we started this document, about the Pineal Gland and the Christ stones, so as soon as I began to channel, so importantly decoded, everything began to take shape.

As we see in the image, the Stone has in its engravings, a camel on top resting is a kind of lintel resting on two ears or open wings of a Sun, with twelve rays or thick-headed needles, allegedly allegorical of the 12 strands of DNA that our Creators have active and which are lethargic, in the physical and dense body of humans.

THE PINEAL GLAND AND THE CRISTIC STONES

Esta Piedra, is the representation of the symbolic passage of the Camel through the Ojoof the Aguja.

We can say that it is allegorical to the transitof the humanbeing, of dense and heavy bodies, of 3D,to the ethereal. Only way of access to themultidimensional fields, when we begin the march ofthe divineBeing, we are, leaving behind,the enormous heaviness of the human Ego.

Theessence instructs us on the very complicated "return" to the physical body of our Energy-Soul, having begun the path to higher planes, through the Tunnel of Light, when we suddenly return to the "density" of our physical body, in the linear 3D.

He returned, after initiating the whole process of "liberation" from the human Ego, leaving behind all the sufferings and mistreatment suffered by the physical body, after finding the Creator inside you and activating the divine spark located in the Pineal Gland. We are simply facing the most devastating experience of themulti-dimensional worlds, where man and his Divinity meet for the first and only time.

Quienes go through thisexperienceand return to the physical body are, in a way, the most prepared to understand and transmit the quantum words commented at the beginning: It is, like passing a camel through the eye ofa needle!

Although it is a normal fact of the process, life-death, it is in these trances where it is activated at maximum electromagnetic power, the Pineal Gland,with the activation of the 12 strands of DNA that connectsus, Being divine or I Superior, with the Creators, in the Great Central Sun.

During this process disappears thebond s, Space-Time, we ceased to be "dense" andbecame ethereal Spirits. From that moment, all diseases or ailments, remain in the physical body,in abriefly indefinite time, the Being- Energy again feel the happiness on the other side of the "veil",is freed from karma and returns to the origins.

Those of us who have gone through this experience, become timeless and clear candidates to become quantum beings, we are enemies of the concept, Space-Time,even inour 3D passage, the truth is that we love to change frequently,from zones and residence, to the point of feeling, that we live different lives in one body. It is also common, the loss of the fear of dying, perhaps because we alreadyknow, both parts of the "Veil".

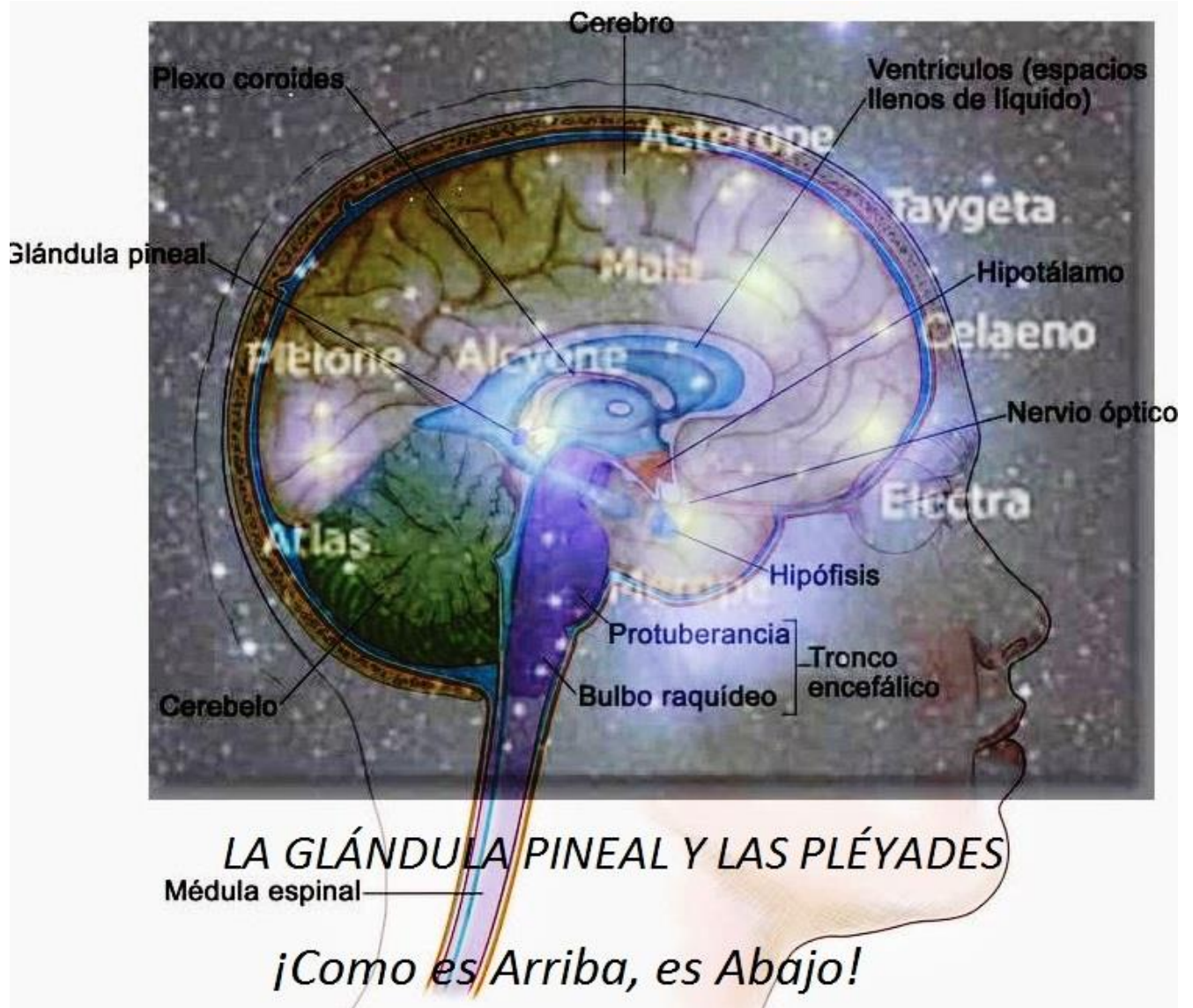
THE HUMAN BRAIN AND THE LAYADES

The lower gene, is the product of a cosmic revelation, received during an astral journey, with two Stones of Ica, which carried me to the gates of Pléyades, in an indefinite time.

When I was close to its main star, Alcyone,I saw in it, the Eye of Horus, in those moments, I was afraid and returned immediately, to my physical body.

Documenting this research has made me understand, so enigmatic "journey".

THE PINEAL GLAND AND THE CRISTIC STONES



It is clear and it is, more than convincing, that the Pleyadians gave in to our Humanity, its biology and genetics, but in its image and likeness.

Just as there were draconian races and man-animal mutations, different from unified humans. Possibly that Pleyadian "unification" was sealed even with visible physical bonds, creating the structure of our brain, in the likeness of its Constellation, The Pleiades!, as the superior image overlay does not demonstrate.

Clearly, the perfect fit of the Pléyades with the section of the human brain, even going into detail, its Central Sun, Alcyone, emulates the exact position of the Pineal Gland, until the lower cluster of stars follows the link path to the spinal cord of the brain.

It's all coughing up, it's very difficult for them to be casual, it's becoming more and more obvious that we're part of a Great Cosmic Plan.

You don't love

Joseph Serneguet

THE PINEAL GLAND AND THE CRISTIC STONES

Summary

THE PINEAL GLAND.....	11
.....	1
DR.2CABRERA'S	
..... 2 RESEARCH 2	
YOUR ARGUMENTS.....	22
.....	2
STONE OF THE 12 STRANDS OF DNA	45
.....	4
OPENING OF MIND AND REVELATION	56
.....	5
PLEJADIAN TEXT OF THE 12 STRANDS OF DNA	66
.....	6
THE PINEAL GLAND IN ANCIENT CULTURES.....	66
.....	6
EVOLVED HUMANS	88
.....	8
OTHER ANCESTRAL DATA	99
.....	9
THE TREE OF LIFE	1010
.....	10
THE NAZCA	1111 BOARD
.....	11
COGNITIVE IMPLANTS	1212
.....	12
PLEYADIANA VERSION	1313
.....	13
BRAIN OPERATIONS	1314
.....	13
THE PINEAL GLAND AND COSMOS	1515
.....	15
THE LAYADES AND THE CROP CIRCLES	1516
.....	15
LIVING LIBRARY.....	1617
.....	16
INTERMEDIATE HUMANITIES OF PLANET-LABORATORY	1717
.....	17
THE CRISTIC STONES.....	1818
.....	18
PLEYADIAN CRISTIC IMPLANTS.....	1919
.....	19
CRISTICS OF DECEMBER 25,	1920
.....	19
LAST SCENE	2021
.....	20

THE PINEAL GLAND AND THE CRISTIC STONES

PLEJADIAN GENETIC CODES	2222
.....	22
THE POWERS OF THE PINEAL GLAND	2324
.....	23
THE HUMAN BRAIN AND THE LAYADES	2525
.....	25
OVERVIEW	2727
.....	27